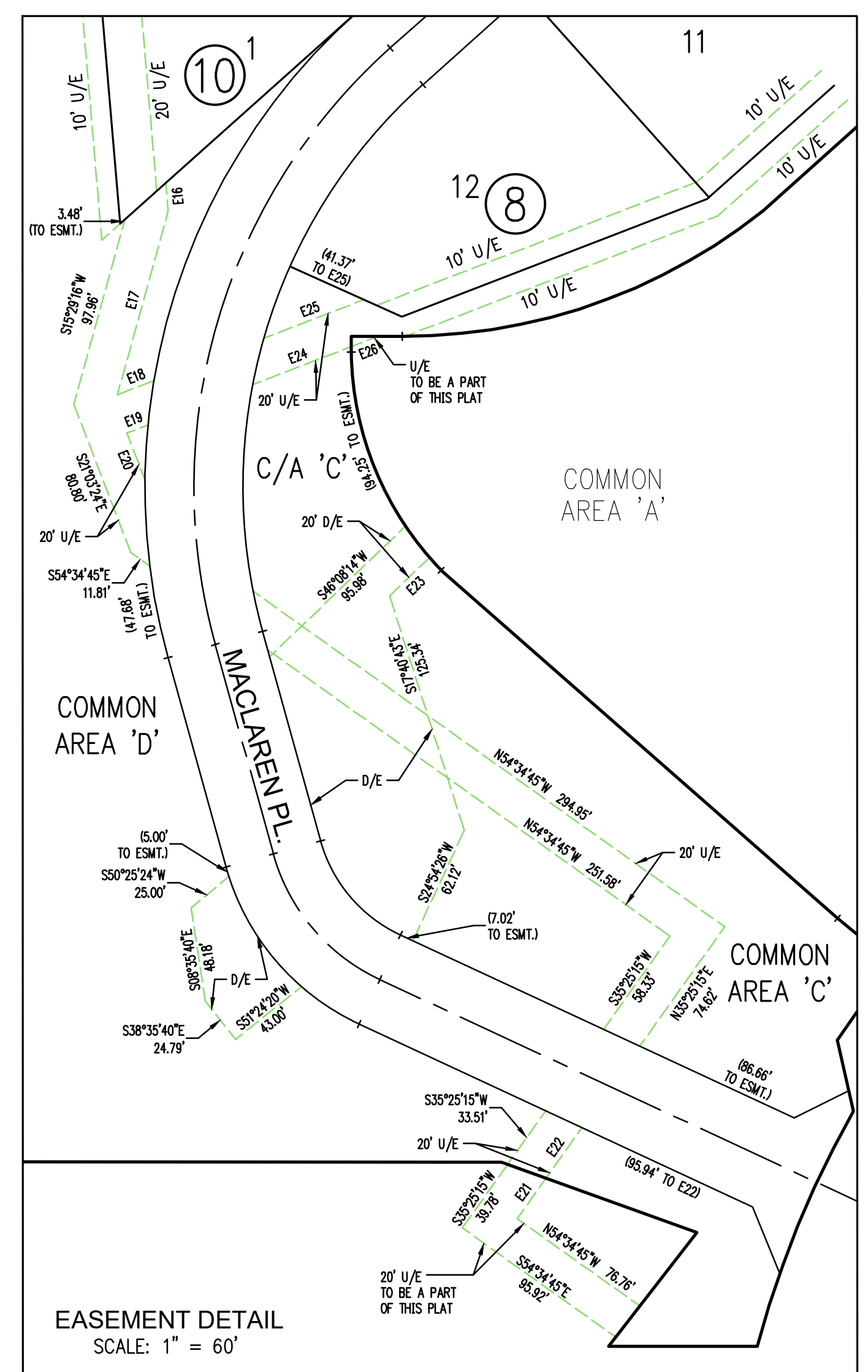
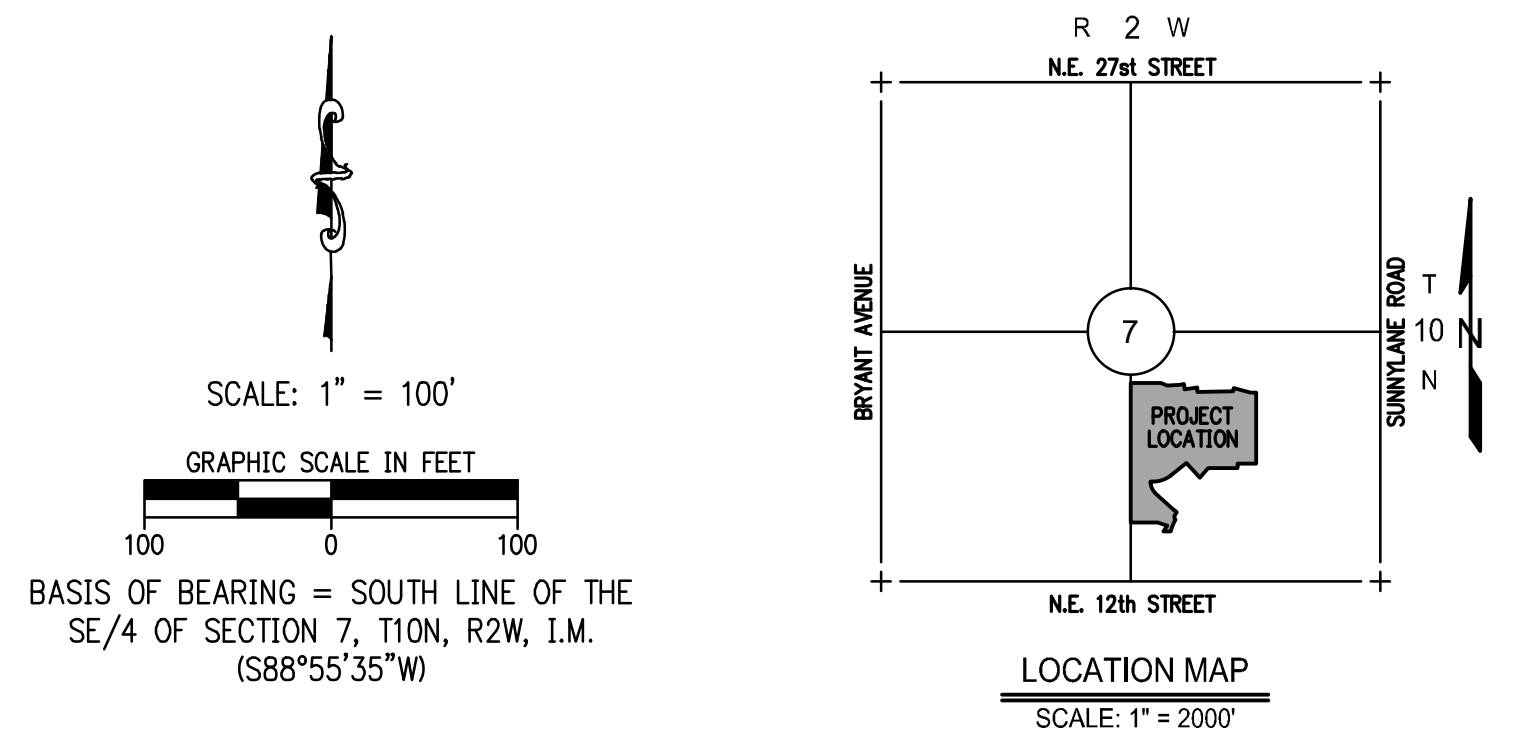


FINAL PLAT OF SONOMA LAKES ADDITION PHASE II

A PART OF THE SE/4 OF SECTION 7, T10N, R2W, I.M.
MOORE, CLEVELAND COUNTY, OKLAHOMA



EASEMENT CURVE TABLE					
CURVE #	LENGTH	RADIUS	DELTA	CHORD DIRECTION	CHORD LENGTH
C1	29.15'	175.00'	009°32'35"	S09° 13' 14"E	29.11'
C2	22.00'	225.00'	005°36'08"	S11° 11' 28"E	21.99'
C3	198.51'	292.86'	038°50'12"	S70° 50' 17"W	194.73'
C4	123.29'	162.67'	043°25'31"	S22° 26' 34"E	120.36'
C5	17.90'	163.04'	006°17'24"	S51° 53' 34"E	17.89'
C6	129.67'	517.57'	014°21'16"	S22° 14' 49"W	129.33'
C7	89.63'	100.00'	051°21'18"	N25° 39' 40"W	86.66'
C8	67.22'	75.00'	051°21'18"	N25° 39' 40"W	65.00'
C9	112.04'	125.00'	051°21'18"	N25° 39' 40"W	108.33'
C10	88.13'	100.00'	050°29'35"	N63° 54' 29"E	85.30'
C11	66.10'	75.00'	050°29'35"	N63° 54' 29"E	63.98'
C12	110.16'	125.00'	050°29'35"	N63° 54' 29"E	106.63'
C13	142.92'	200.00'	040°56'33"	N68° 41' 00"E	139.90'
C14	160.78'	225.00'	040°56'33"	S68° 41' 00"W	157.38'
C15	125.05'	175.00'	040°56'33"	S68° 41' 00"W	122.41'
C16	64.41'	100.00'	036°54'09"	S23° 20' 12"E	63.30'
C17	48.31'	75.00'	036°54'09"	S23° 20' 12"E	47.47'
C18	80.51'	125.00'	036°54'09"	S23° 20' 12"E	79.12'
C19	185.35'	200.00'	053°05'51"	S21° 39' 48"W	178.78'
C20	162.18'	175.00'	053°05'51"	S21° 39' 48"W	156.44'
C21	208.51'	225.00'	053°05'51"	S21° 39' 48"W	201.13'
C22	217.13'	200.00'	062°12'15"	S17° 06' 36"W	206.63'
C23	54.75'	200.00'	015°41'09"	N40° 22' 09"E	54.58'
C24	162.38'	200.00'	046°31'06"	N09° 16' 01"E	157.96'
C25	189.99'	175.00'	062°12'15"	N17° 06' 36"E	180.80'
C26	115.53'	225.00'	002°56'14"	N46° 44' 36"E	115.53'
C27	132.61'	225.00'	033°46'10"	N02° 53' 33"E	130.70'
C28	33.31'	200.00'	009°32'35"	S09° 13' 14"E	33.27'
C29	37.48'	225.00'	009°32'35"	S09° 13' 14"E	37.43'
C30	58.24'	100.00'	033°22'17"	S74° 09' 35"E	57.42'
C31	43.68'	75.00'	033°22'17"	S74° 09' 35"E	43.07'
C32	72.81'	125.00'	033°22'17"	S74° 09' 35"E	71.78'
C33	28.24'	100.00'	016°10'54"	S82° 45' 16"E	28.15'
C34	35.30'	125.00'	016°10'54"	N82° 45' 16"W	35.19'
C35	21.18'	75.00'	016°10'54"	N82° 45' 16"W	21.11'
C36	81.42'	200.00'	023°19'31"	N26° 59' 56"E	80.86'
C37	71.24'	175.00'	023°19'31"	N26° 59' 56"E	70.75'
C38	91.60'	225.00'	023°19'31"	N26° 59' 56"E	90.97'
C39	333.63'	300.00'	063°43'08"	S16° 21' 09"W	316.70'
C40	361.43'	325.00'	063°43'08"	S16° 21' 09"W	343.09'
C41	305.83'	275.00'	063°43'08"	S16° 21' 09"W	290.31'
C42	86.54'	100.00'	049°35'09"	S40° 17' 59"E	83.87'
C43	108.18'	125.00'	049°35'09"	S40° 17' 59"E	104.84'
C44	64.91'	75.00'	049°35'09"	S40° 17' 59"E	62.90'

LINE TABLE		
LINE #	LENGTH	DIRECTION
L1	26.06'	N89° 59' 01"W
L2	8.09'	S00° 00' 59"W
L3	17.89'	S55° 01' 57"E
L4	50.00'	S34° 58' 03"W
L5	37.11'	S12° 40' 35"E
L6	75.70'	N89° 59' 01"W
L7	73.30'	N37° 49' 37"E
L8	105.86'	N70° 11' 15"W
L9	35.36'	N83° 39' 42"E
L10	35.36'	N06° 20' 18"W
L11	35.36'	N86° 47' 17"W
L12	39.25'	N83° 37' 16"E
L13	39.25'	N18° 34' 09"W
L14	35.36'	N60° 20' 11"E
L15	35.36'	S29° 39' 49"E
L16	61.66'	N41° 47' 17"W
L17	50.00'	N57° 28' 26"W
L18	50.00'	N74° 39' 49"W
L19	35.36'	S03° 12' 43"W
L20	31.11'	N63° 36' 51"E
L21	36.61'	N22° 10' 09"W

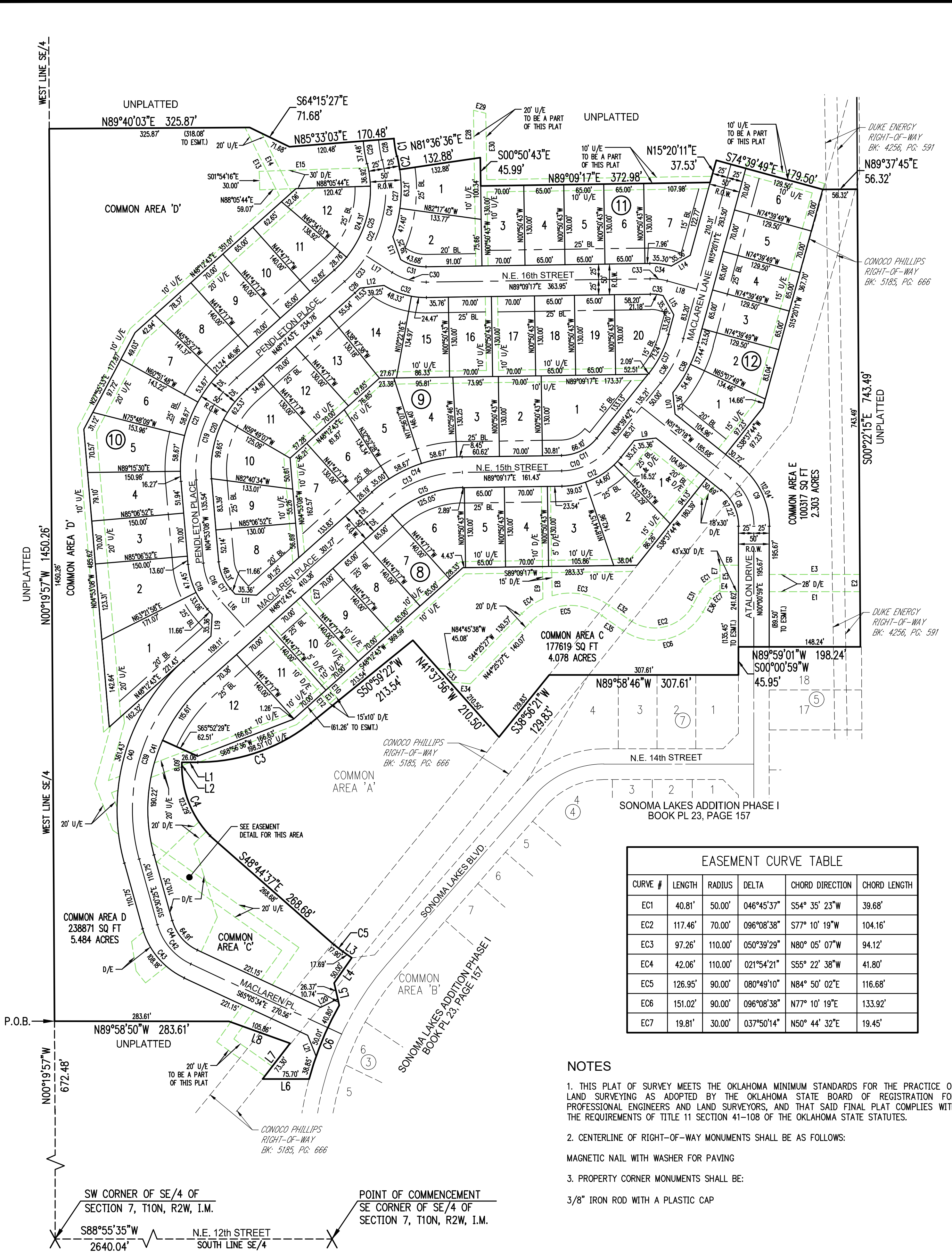
EASEMENT TABLE		
LINE #	LENGTH	DIRECTION
E1	147.64'	S89° 59' 01"E
E2	28.00'	N00° 22' 15"W
E3	24.05'	N89° 59' 01"W
E4	30.00'	N89° 59' 01"W
E5	43.00'	N00° 00' 59"E
E6	30.00'	S89° 59' 01"E
E7	20.14'	S00° 00' 59"W
E8	47.45'	S00° 50' 43"E
E9	52.53'	N00° 50' 43"W
E10	20.00'	S41° 47' 17"E
E11	15.00'	S48° 12' 43"W
E12	20.00'	N41° 47' 17"W
E13	123.57'	N26° 51' 48"W
E14	108.06'	N26° 51' 48"W
E15	176.90'	N88° 05' 44"E
E16	14.31'	S04° 53' 08"E
E17	97.21'	N15° 29' 16"E
E18	19.91'	S68° 56' 36"W
E19	11.43'	S68° 56' 36"W
E20	25.46'	N21° 03' 24"W
E21	25.36'	N35° 25' 15"E
E22	31.64'	N35° 25' 15"E
E23	28.12'	S46° 08' 14"W
E24	53.70'	S68° 56' 36"W
E25	54.78'	S68° 56' 36"W
E26	14.90'	S68° 56' 36"W
E27	18.64'	N04° 53' 08"W
E28	78.26'	N00° 50' 43"W
E29	20.62'	S76° 42' 19"E
E30	107.89'	S00° 50' 43"E
E31	26.40'	S29° 06' 00"W
E32	40.94'	N54° 45' 23"W
E33	29.26'	S41° 37' 56"E
E34	33.23'	S84° 45' 38"E
E35	40.94'	S54° 45' 23"E
E36	25.98'	N29° 06' 00"E

EASEMENT CURVE TABLE					
CURVE #	LENGTH	RADIUS	DELTA	CHORD DIRECTION	CHORD LENGTH
EC1	40.81'	50.00'	046°45'37"	S54° 35' 23"W	39.68'
EC2	117.46'	70.00'	096°08'38"	S77° 10' 19"W	104.16'
EC3	97.26'	110.00'	050°39'29"	N80° 05' 07"W	94.12'
EC4	42.06'	110.00'	021°54'21"	S55° 22' 38"W	41.80'
EC5	126.95'	90.00'	080°49'10"	N84° 50' 02"E	116.68'
EC6	151.02'	90.00'	096°08'38"	N77° 10' 19"E	133.92'
EC7	19.81'	30.00'	037°50'14"	N50° 44' 32"E	19.45'

LEGEND	
BL	BUILDING LIMIT LINE
D/E	DRAINAGE EASEMENT
EX	EXISTING
L.N.A.	LIMITS OF NO ACCESS
(NR)	NONRADIAL LINE
P.O.B.	POINT OF BEGINNING
R.O.W.	RIGHT-OF-WAY
U/E	UTILITY EASEMENT

NOTES

- THIS PLAT OF SURVEY MEETS THE OKLAHOMA MINIMUM STANDARDS FOR THE PRACTICE OF LAND SURVEYING AS ADOPTED BY THE OKLAHOMA STATE BOARD OF REGISTRATION FOR PROFESSIONAL ENGINEERS AND LAND SURVEYORS, AND THAT SAID FINAL PLAT COMPLIES WITH THE REQUIREMENTS OF TITLE 11 SECTION 41-108 OF THE OKLAHOMA STATE STATUTES.
- CENTERLINE OF RIGHT-OF-WAY MONUMENTS SHALL BE AS FOLLOWS:
MAGNETIC NAIL WITH WASHER FOR PAVING
- PROPERTY CORNER MONUMENTS SHALL BE:
3/8" IRON ROD WITH A PLASTIC CAP

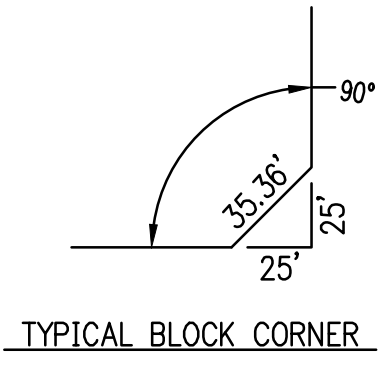


FINAL PLAT TO SERVE
SONOMA LAKES ADDITION PHASE II

214 E. Main
Oklahoma City, Oklahoma 73104

Crafton Tull
architecture | engineering | surveying
405.787.6270 | 405.787.6276 | www.craftontull.com

SHEET NO.: 2 of 2
DATE: 07/01/16
PROJECT NO.: 15603100



DRAWING CUSTODIAN: SONOMA LAKES ADDITION PHASE II